


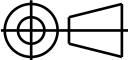
2D CAD drawing

CR_LC_TCP_HOUSING_TYPE_B_DET

CR_LC_TCP_HOUSING_TYPE_B_DET

Approval Process			
	Name	Action	Affiliation
Author	Vauquelin J.	24 May 2018:signed	IO/DG/COO/CIO/DO/CAD
Co-Authors			
Reviewers	Dube V. More V.	25 May 2018:recommended (Fast Track) 29 May 2018:recommended	IO/DG/COO/CST/TAD/ICA IO/DG/COO/CST/TAD/ICA
Previous Versions Reviews	Beaudoire S. Bhardwaj A.	27 Apr 2018:recommended v1.6 18 Apr 2018:recommended v1.6	IO/DG/COO/CIO/DO/CAD IO/DG/COO/CST/TAD/ICA
Approver	Petit P.	31 May 2018:approved	IO/DG/COO/CST/TAD/ICA
Document Security: Internal Use RO: Bhardwaj Anil			
Read Access	LG: TCPH task force team, LG: Cryostat IO team, AD: ITER, AD: External Collaborators, AD: IO_Director-General, AD: EMAB, AD: Auditors, AD: ITER Management Assessor, project administrator, RO, LG: CAD , AD: DA-IN		

<i>Change Log</i>			
CR_LC_TCP_HOUSING_TYPE_B_DET (TELDJT)			
<i>Version</i>	<i>Latest Status</i>	<i>Issue Date</i>	<i>Description of Change</i>
v1.0	Signed	02 Nov 2016	
v1.1	Signed	24 Nov 2016	Version following Matthias comment about Sealing plane.
v1.2	Signed	20 Jan 2017	Update following INDA comments and upgrades. Update of the RH interface and of its related tolerances.
v1.3	Signed	13 Mar 2017	update following comments
v1.4	Approved	29 Mar 2017	Update of the Pump Holes definition following Matthias Dremel comment
v1.5	Approved	21 Jul 2017	draft version
v1.6	Revision Required	03 Apr 2018	DR-34: Removal of a Diagnostic penetration
v1.7	Approved	24 May 2018	- addition of tolerances for holes - shifting of the monitoring pipe stubs

ITER_D_TELDJT v1.7		2	3	4	5	6	7	8		
A										
B										
C										
D										
REV No.	DETAILS OF MODIFICATION			SHEET No.	GRID REF	DATE	DCR No.			
DRW DOC ID		Q5BJF9		RELEASED BY		ITER Organization				
LINKED EV5 PT ID		U2L8RU		APPROVED BY		<div> china EU india japan korea russia USA</div>				
PBS TITLE		Cryostat & VVPSS Cryostat Lower Cylinder		CHECKED BY					BEAUDOS	
REV DATE		03 Apr 18		PT MATURITY					CD	
SHEET SIZE		420x297		PT Status					D	
THIRD ANGLE PROJECTION				NO. OF SHTS		08		24 CR, LC		
DRAWING NUMBER		034460		SHEET		01		-- D		
DRAWING NUMBER		034460		REVISION		-- D		D		

Spacereservation for the banner

Spacereservation for the banner

A

B

C

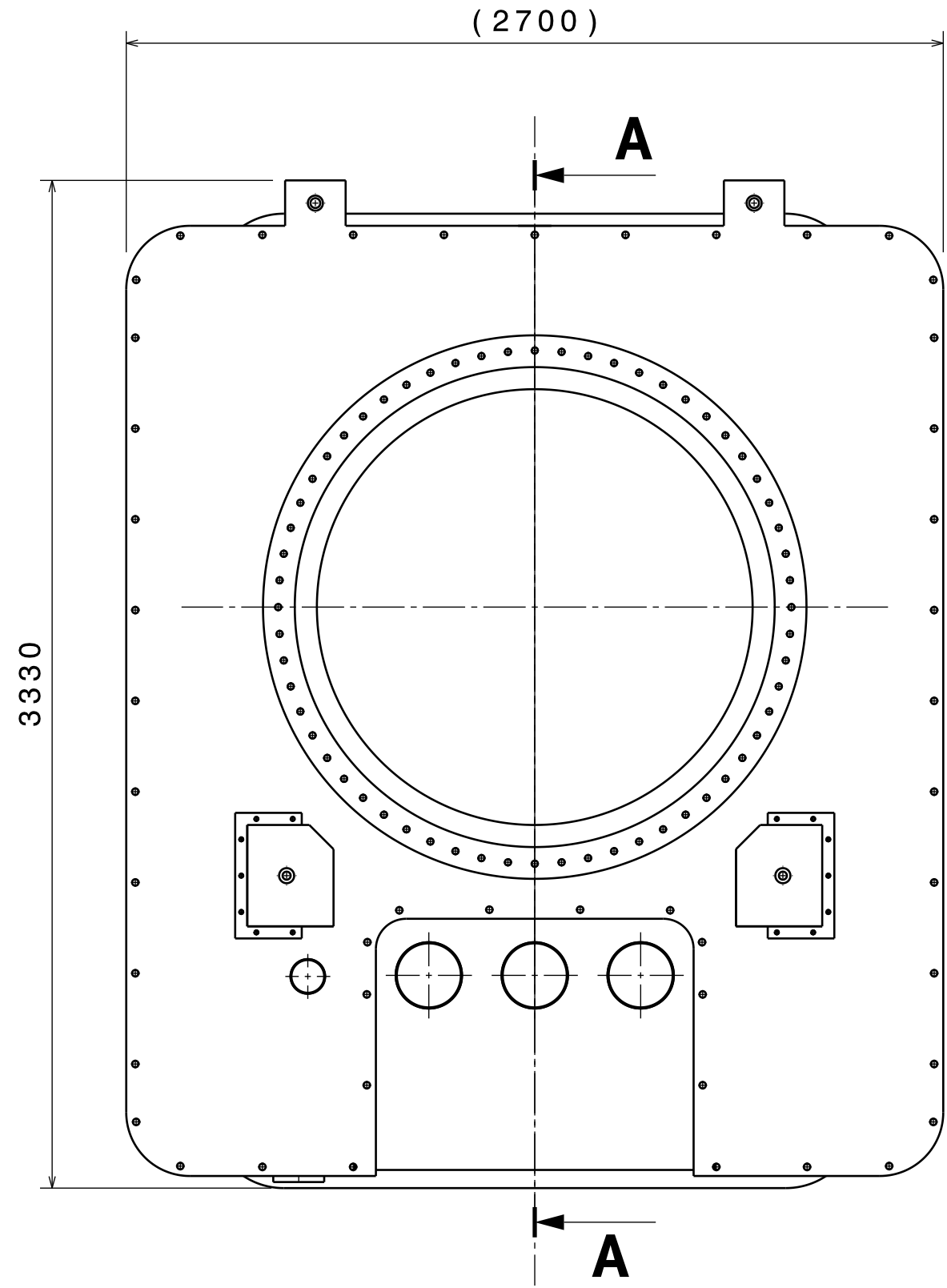
D

E

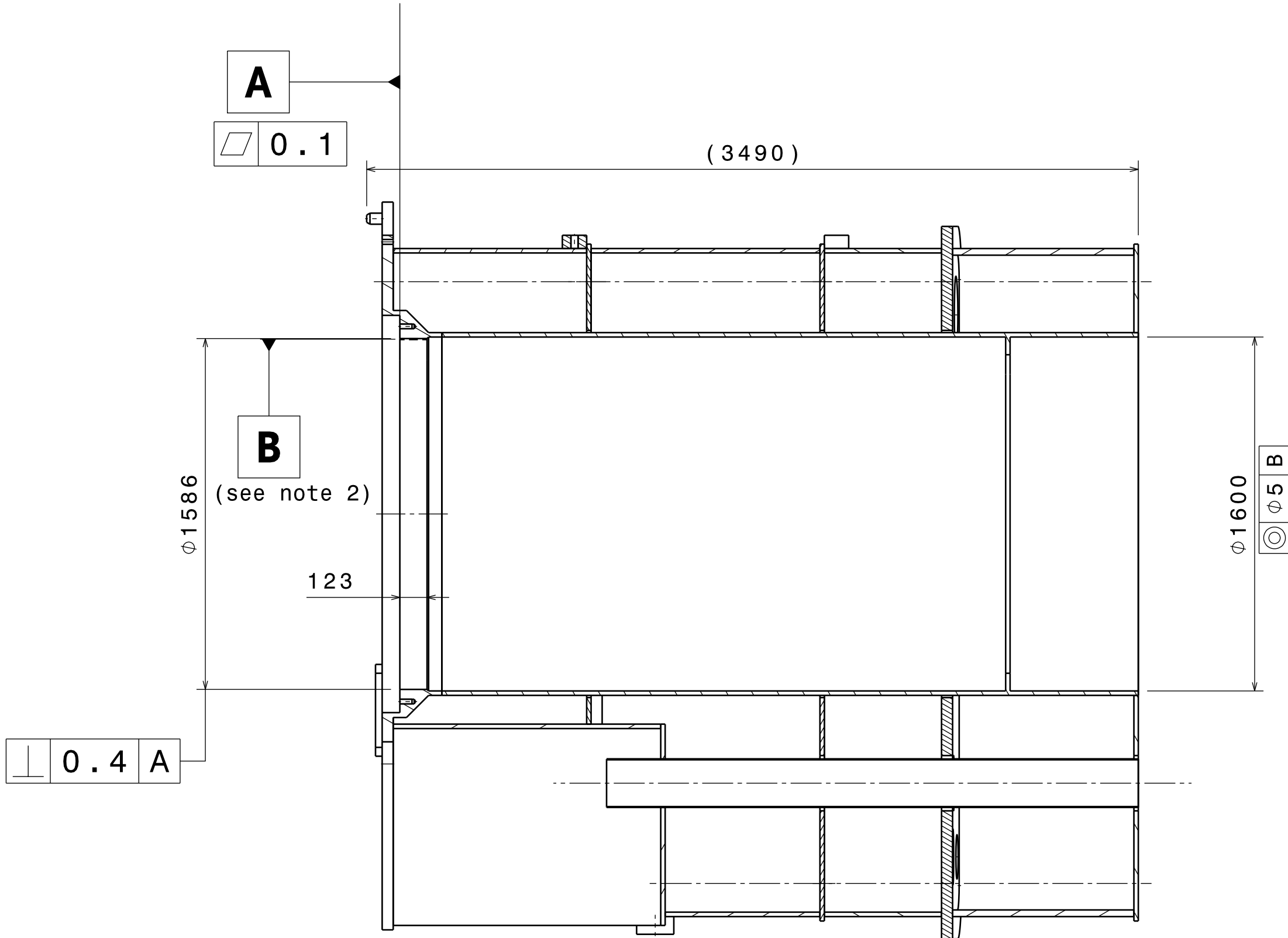
F

G

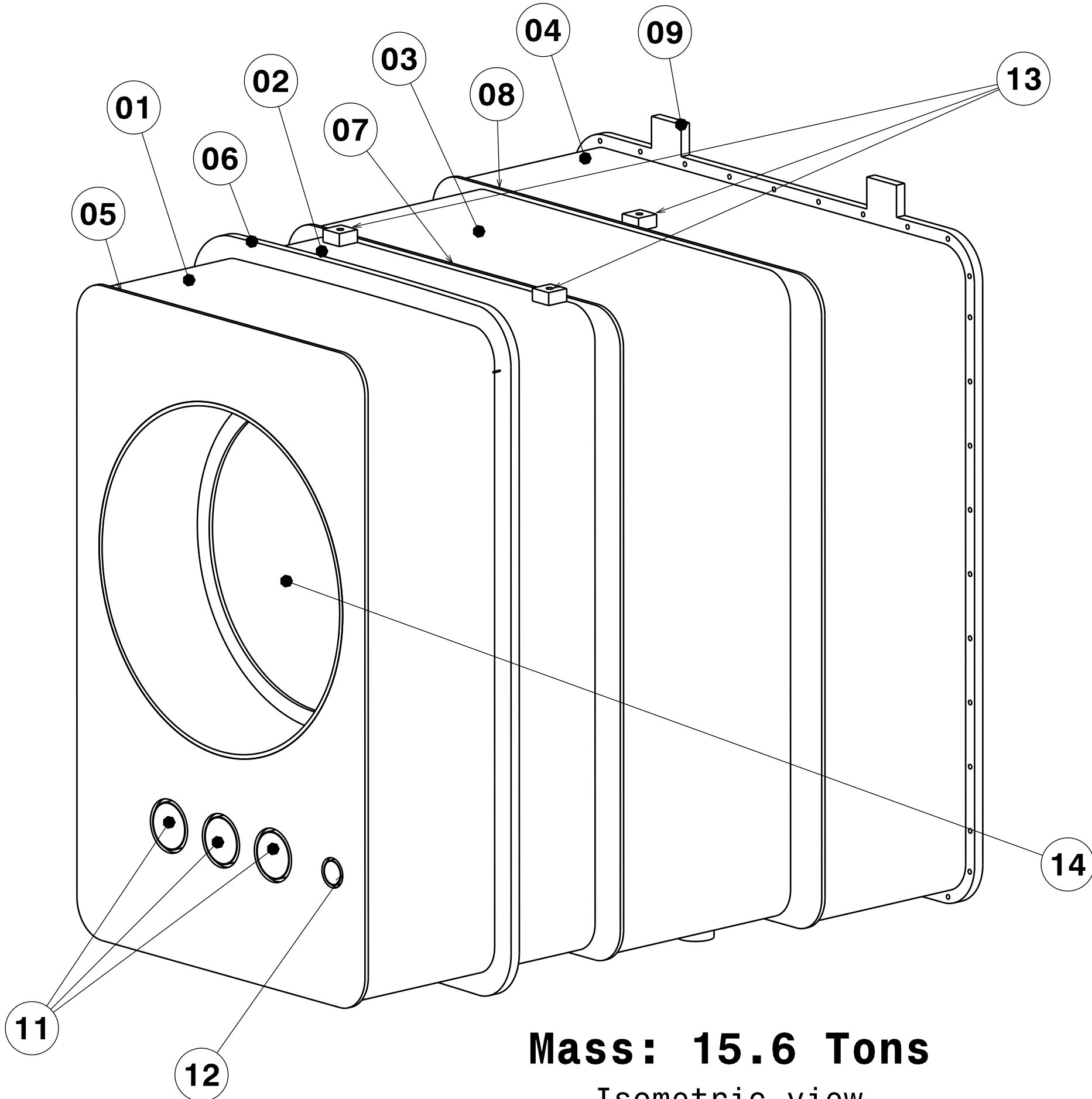
H



Front view



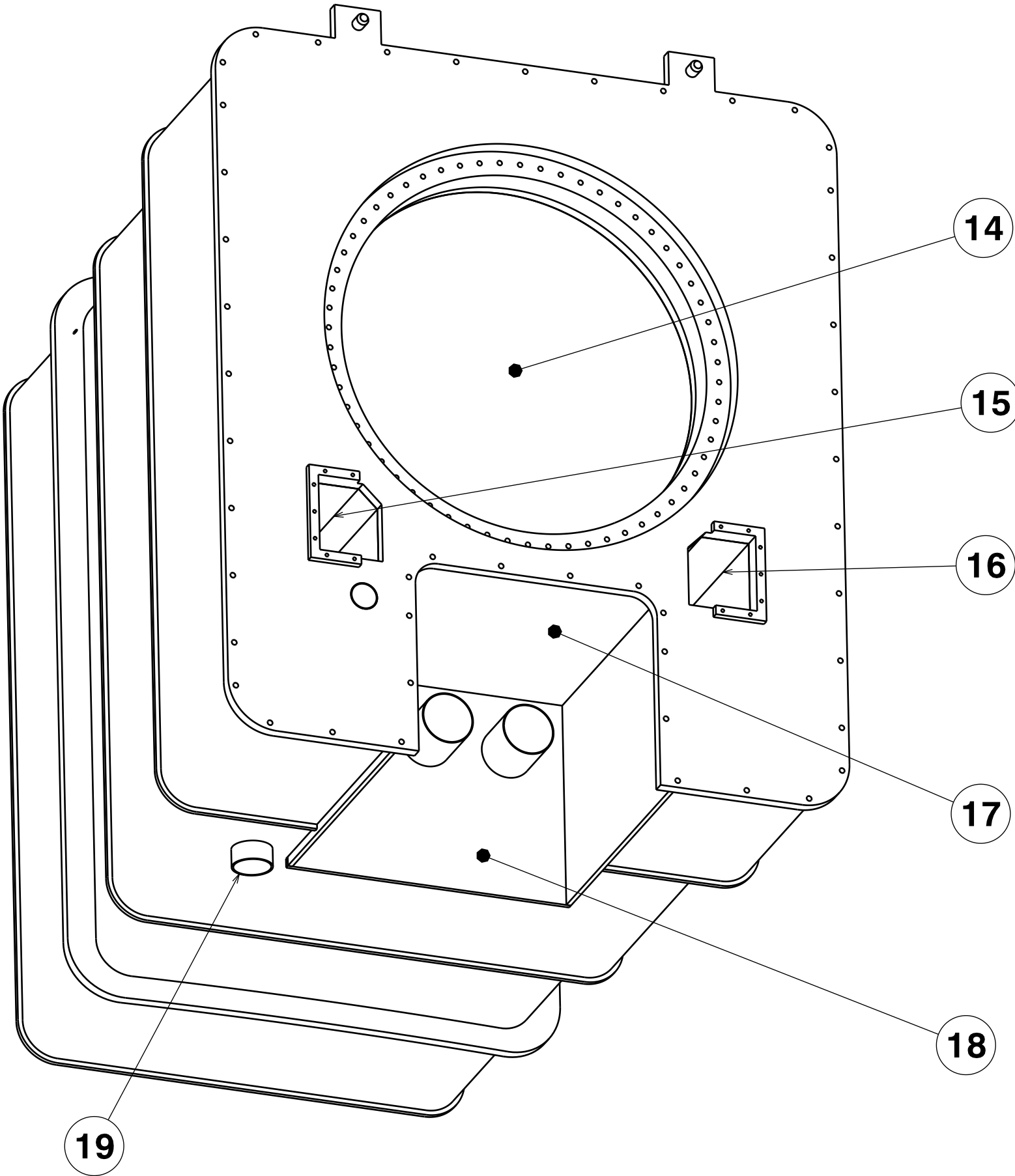
Section view A-A




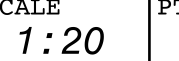
Mass: 15.6 Tons
Isometric view

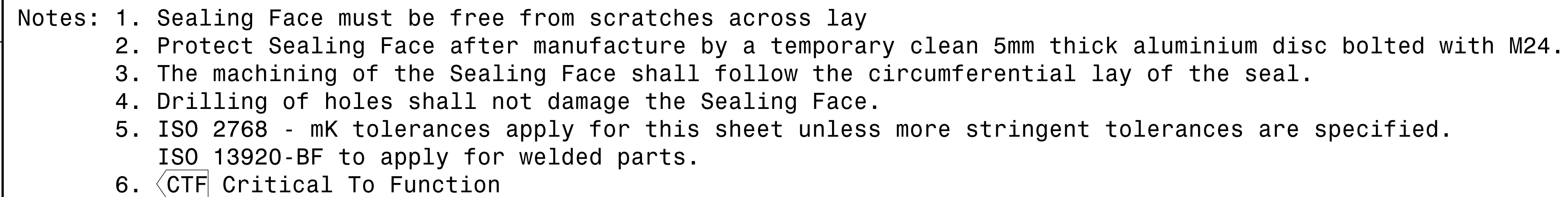
Notes: 1. ISO 2768 - mK tolerances apply for this sheet unless more stringent tolerances are specified.
ISO 13920-BF to apply for welded parts.
2. The Datum B applies on machined inner surface of the Flange


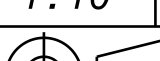
Bill of material					
Part Number	Part reference	Qty	Material / Ref.	Drawing Number	Remarks
01	TCPH_SHELL_01	1	SS 304/304L	034338	
02	TCPH_SHELL_02	1	SS 304/304L	034338	
03	TCPH_SHELL_03	1	SS 304/304L	034338	
04	TCPH_SHELL_04	1	SS 304/304L	034338	
05	TCPH_VERTICAL_PLATE_04	1	SS 304/304L	034340	
06	TCPH_WALL_FLANGE_02	1	SS 304/304L	034344	
07	TCPH_VERTICAL_PLATE_05	1	SS 304/304L	034340	
08	TCPH_VERTICAL_PLATE_03	1	SS 304/304L	034340	
09	TCPH_CRYOPUMP_FLANGE_01	1	SS 304/304L	034345	
10	Deleted				
11	TCPH_PIPE_03_DN200	3	SS 304L; DN200;sch:10S; L:2385mm		
12	TCPH_PIPE_01_DN100	1	SS 304L; DN100; sch:10S; L:3420mm		
13	TCPH_LIFTING_PAD	3	SS 304/304L	034353	
14	TCPH_INNER_CYLIDER	1	SS 304/304L	034351	
15	TCPH_LEFT_RH_SOCKET	1	SS 304/304L	034343	
16	TCPH_RIGHT_RH_SOCKET	1	SS 304/304L	034343	
17	TCPH_BOTTOM_SOCKET	1	SS 304/304L	034349	
18	TCPH_BOTTOM_SOCKET_DEEP_02	1	SS 304/304L	034349	
19	TCPH_VACUUM_PIPE_DN150	1	SS 304L; DN150; sch: 40S; L:80mm		



ISOMETRIC VIEW
Scale: 1:20

DRW DOC ID Q5BJF9			RELEASED BY ---		ITER Organization											
LINKED EV5 PT ID U2L8RU			APPROVED BY PETITPA													
PBS TITLE Cryostat & VVPSS Cryostat Lower Cylinder			CHECKED BY BEAUDOS													
REV DATE 03 Apr 18			PT MATURITY CD		PT VERSION --D		DRAWING TITLE CR_LC_TCP_HOUSING_TYPE_B_DET DATUM AND OVERALL DIMENSIONS									
SHEET SIZE 841x594			SCALE 1:20		PT STATUS D		DRAWN BY VAUQUEJ									
THIRD ANGLE PROJECTION					NO. OF SHTS 08		PBS 3 LEVELS 24 CR_LC		DRAWING NUMBER 034460		SHEET 02		REVISION --D		DR STATUS D	



DRW DOC ID			Q5BJF9			RELEASED BY			---			ITER Organization			 china EU india japan korea russia USA					
LINKED EV5 PT ID			U2L8RU			APPROVED BY			PETITPA											
PBS TITLE						CHECKED BY			DRAWING TITLE											
Cryostat & VVPSS						BEAUDOS														
Cryostat						CONTROLLED BY			CR_LC_TCP_HOUSING_TYPE_B_DET											
Lower Cylinder						VITUPIG			RH FLANGE 1/2											
REV DATE		PT MATURITY		PT VERSION		DRAWN BY														
03 Apr 18		CD		--D		VAUQUEJ														
SHEET SIZE		SCALE		PT STATUS																
841x594		1:10		D																
THIRD ANGLE PROJECTION						NO. OF SHTS			PBS 3 LEVELS			DRAWING NUMBER		SHEET			REVISION		DR STATUS	
						08			24 CR_LC			034460		03			--D		D	

A

B

C

D


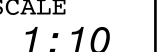
E

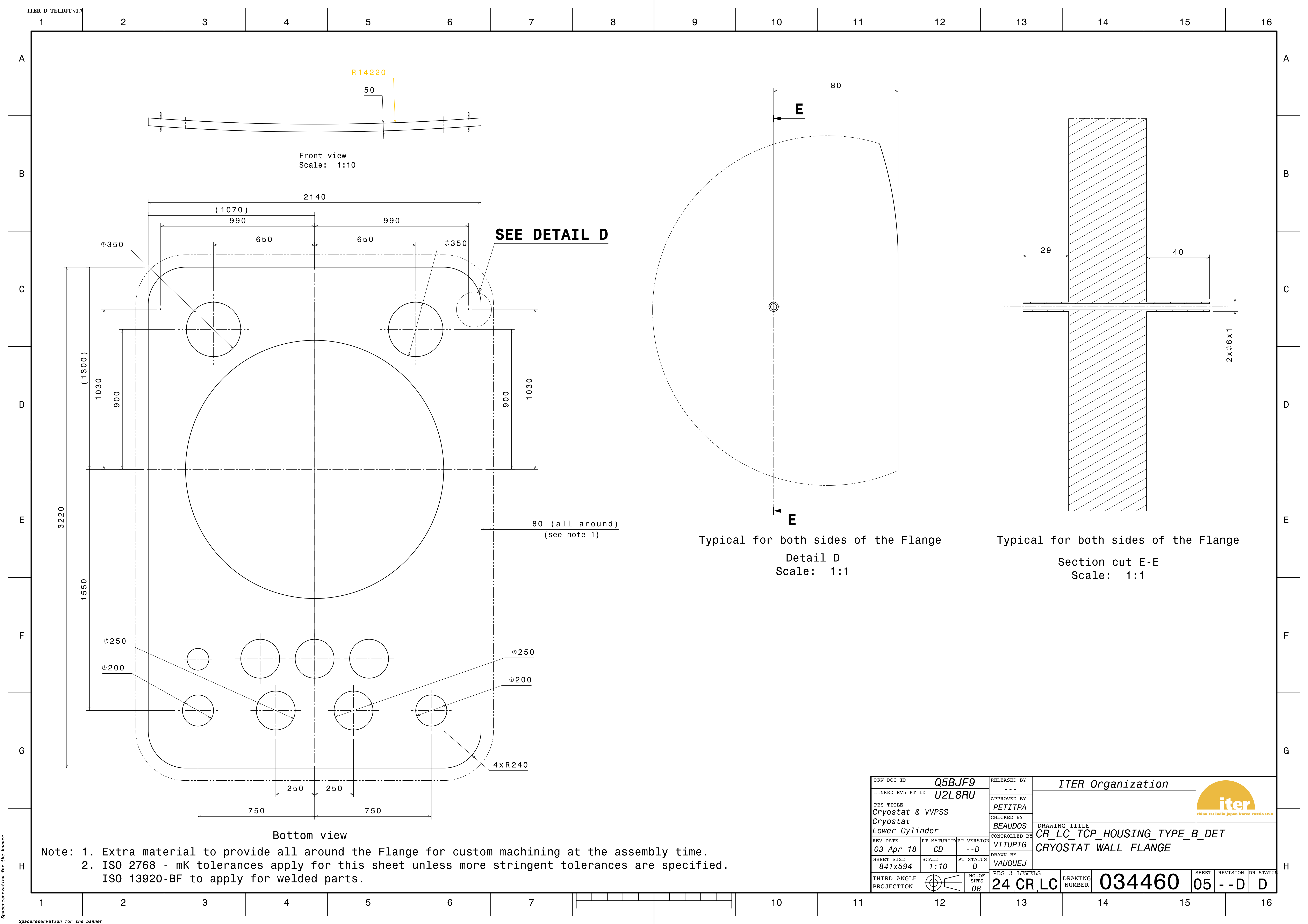
F


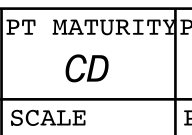
G

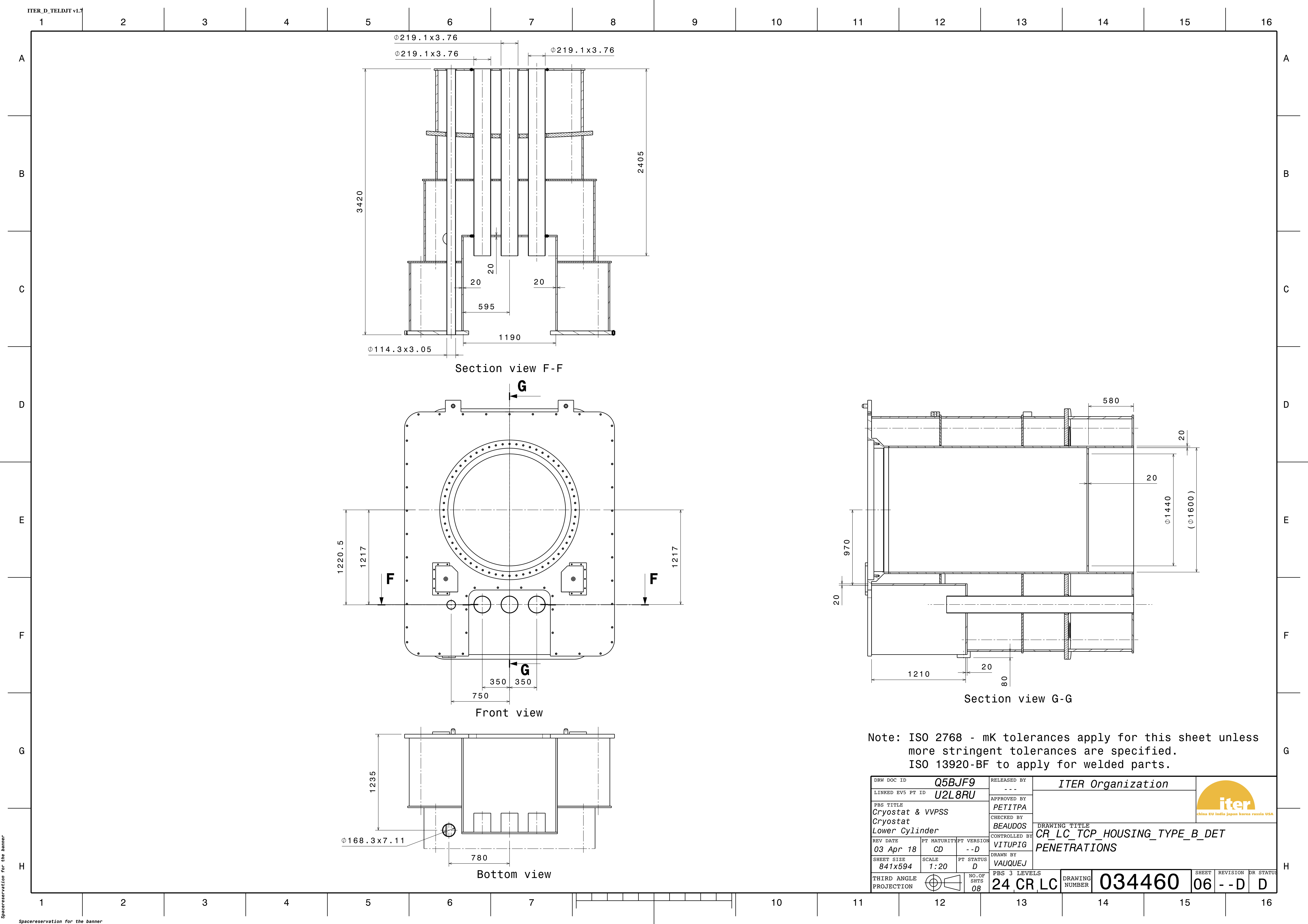
H



DRW DOC ID Q5BJF9			RELEASED BY ---		ITER Organization			 china EU india japan korea russia USA				
LINKED EVS PT ID U2L8RU			APPROVED BY PETITPA		DRAWING TITLE CR_LC_TCP_HOUSING_TYPE_B_DET RH FLANGE 2/2							
PBS TITLE Cryostat & VVPSS			CHECKED BY BEAUDOS									
Cryostat			CONTROLLED BY VITUPIG									
Lower Cylinder			DRAWN BY VAUQUEJ									
REV DATE 03 Apr 18	PT MATURITY CD	PT VERSION --D										
SHEET SIZE 841x594	SCALE 1:10	PT STATUS D										
THIRD ANGLE PROJECTION					NO. OF SHTS 08		PBS 3 LEVELS 24 CR_LC		DRAWING NUMBER 034460	SHEET 04	REVISION --D	DR STATUS D



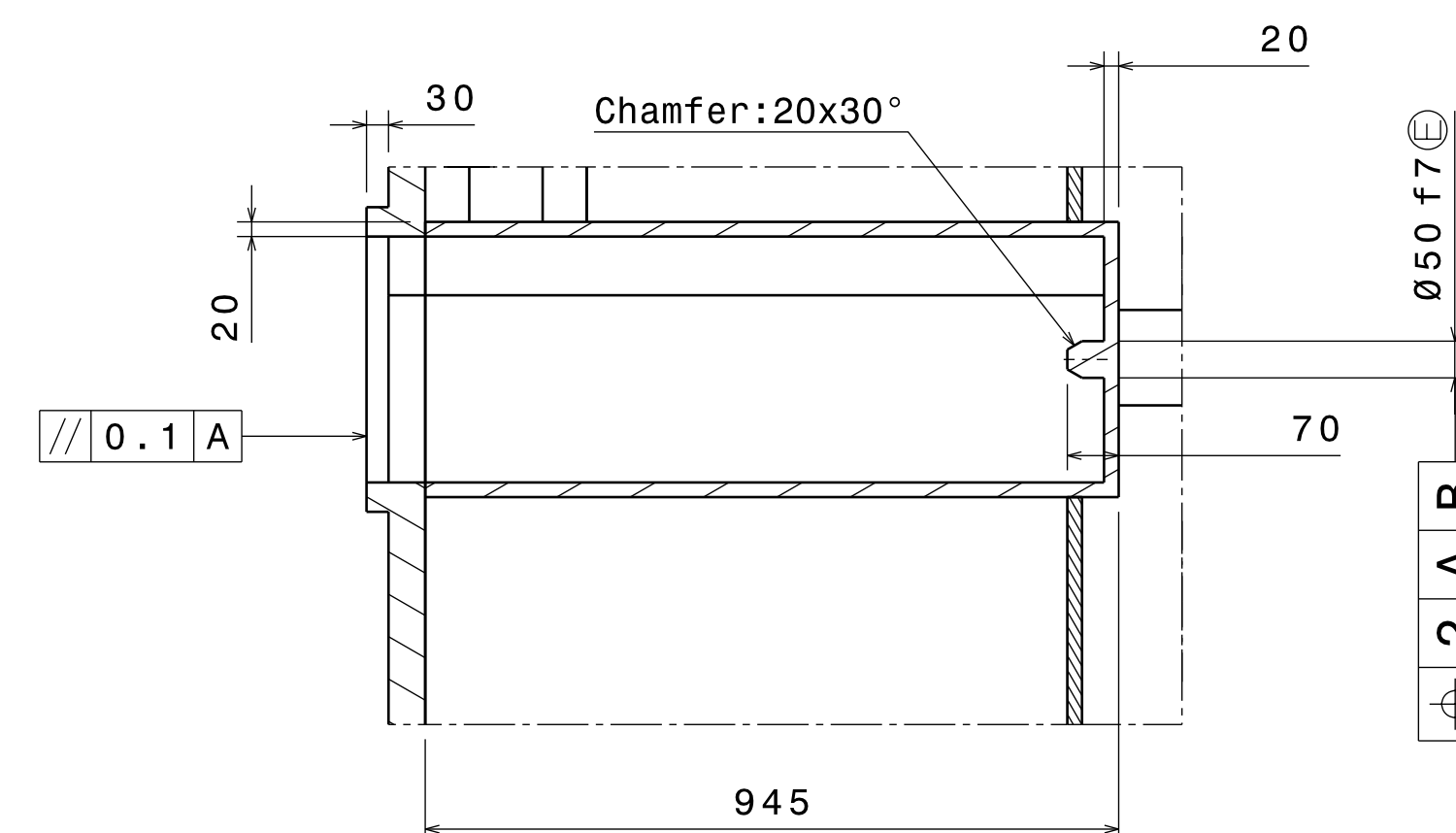
DRW DOC ID			Q5BJF9			RELEASED BY			ITER Organization			 china EU india japan korea russia USA											
LINKED EV5 PT ID			U2L8RU			APPROVED BY			<div>DRAWING TITLE</div> <div>CR_LC_TCP_HOUSING_TYPE_B_DET</div> <div>CRYOSTAT WALL FLANGE</div>														
<div>PBS TITLE</div> <div>Cryostat & VVPSS</div> <div>Cryostat</div> <div>Lower Cylinder</div>						PETITPA																	
						CHECKED BY																	
						BEAUDOS																	
						CONTROLLED BY																	
REV DATE			PT MATURITY			PT VERSION			VITUPIG														
03 Apr 18			CD			--D																	
SHEET SIZE			SCALE			PT STATUS			DRAWN BY														
841x594			1:10			D			VAUQUEJ														
THIRD ANGLE			NO. OF			PBS 3 LEVELS			DRAWING			SHEET			REVISION			DR STATUS					
PROJECTION						SHTS			NUMBER			034460			05			--D			D		
			08			24 CR LC																	




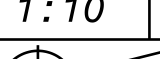


Typical for this socket and its symmetrical

Detail H
Scale: 1:4



Section view I-I

DRW DOC ID		Q5BJF9		RELEASED BY		---		ITER Organization		 <small>china EU india japan korea russia USA</small>	
LINKED EV5 PT ID		U2L8RU		APPROVED BY		PETITPA					
PBS TITLE				CHECKED BY		DRAWING TITLE					
Cryostat & VVPSS				BEAUDOS		CR_LC_TCP_HOUSING_TYPE_B_DET					
Cryostat				CONTROLLED BY		RH SOCKETS					
Lower Cylinder				VITUPIG							
REV DATE	PT MATURITY	PT VERSION	DRAWN BY								
03 Apr 18	CD	--D	VAUQUEJ								
SHEET SIZE	SCALE	PT STATUS									
841x594	1:10	D									
THIRD ANGLE PROJECTION		NO. OF SHTS	PBS 3 LEVELS		DRAWING NUMBER		SHEET		REVISION		DR STATUS
		08	24 CR_LC		034460		07		--D		D

A

B

C

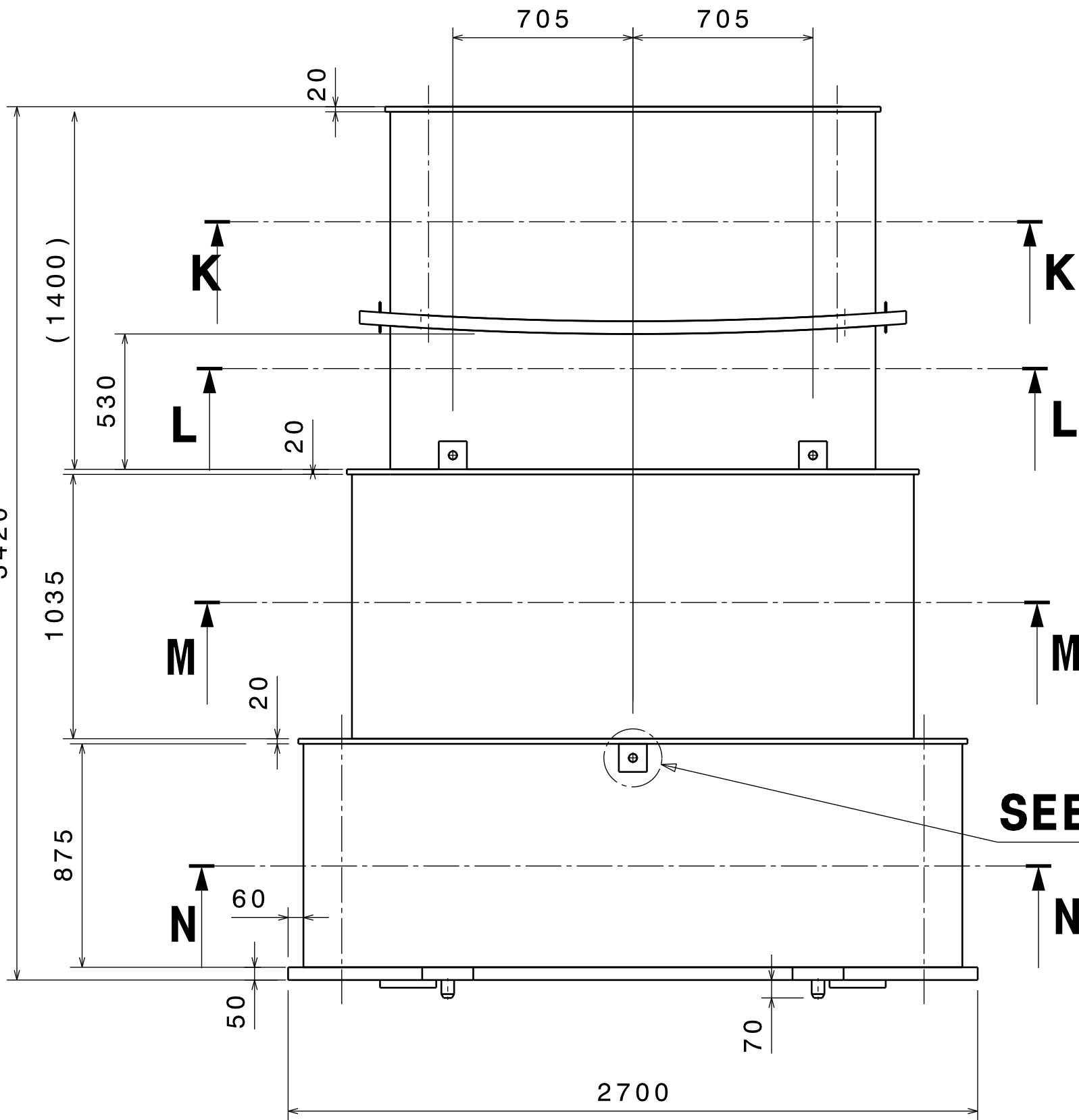
D

E

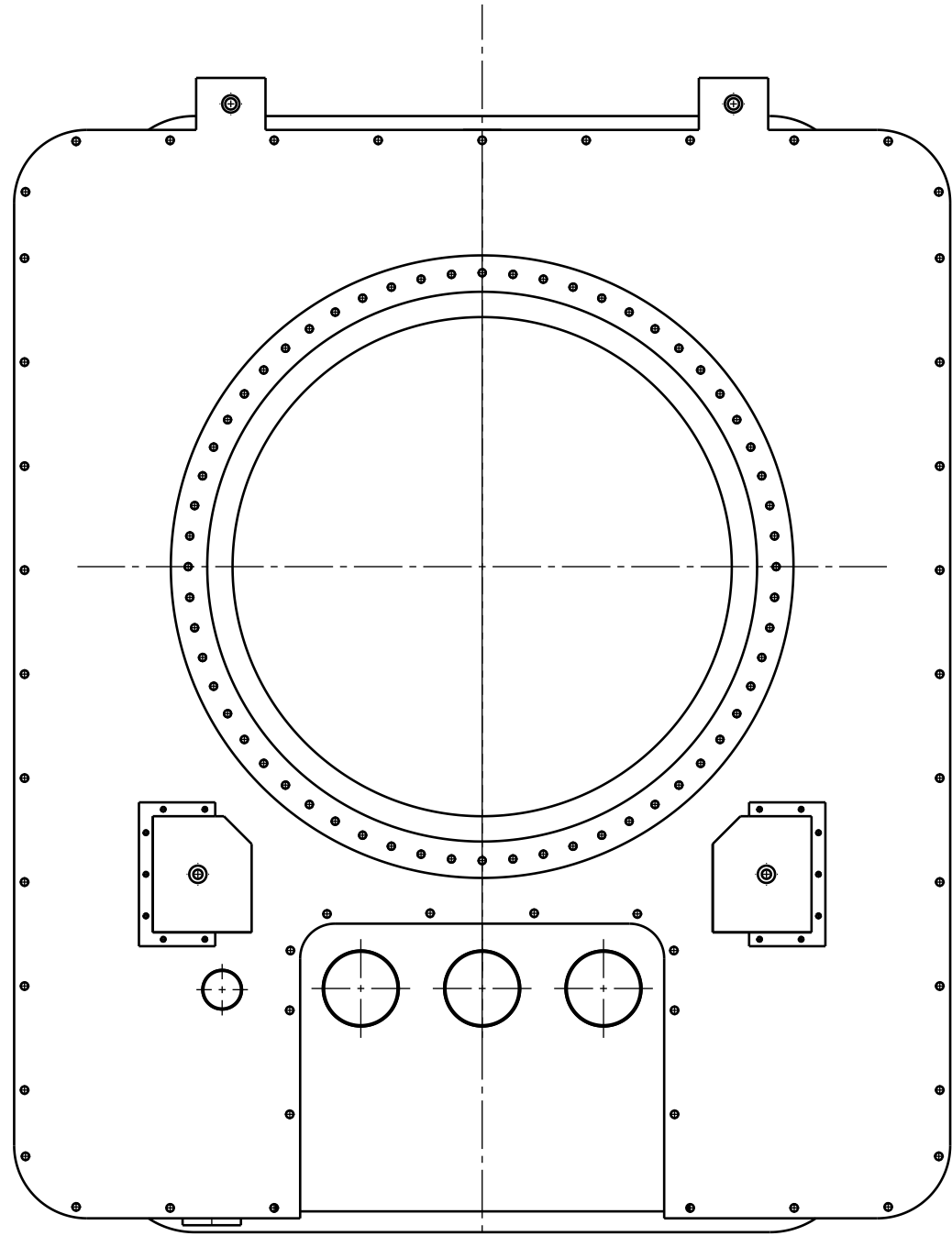
F

G

H

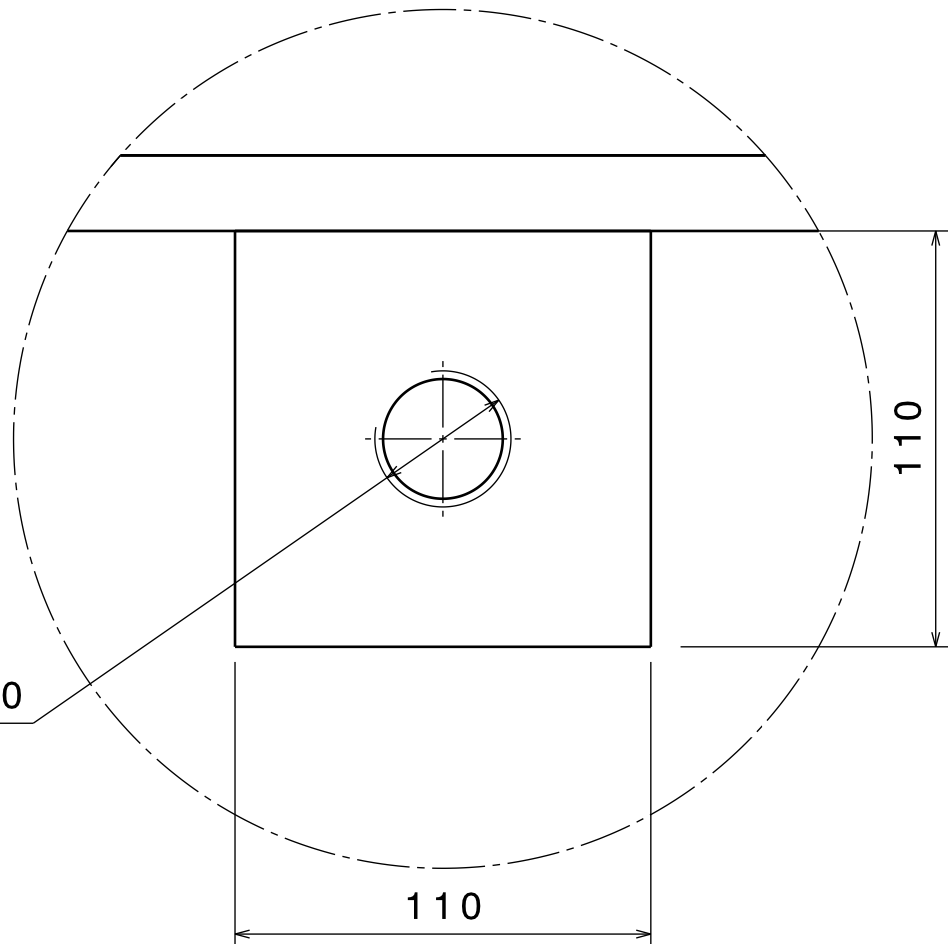


Top view

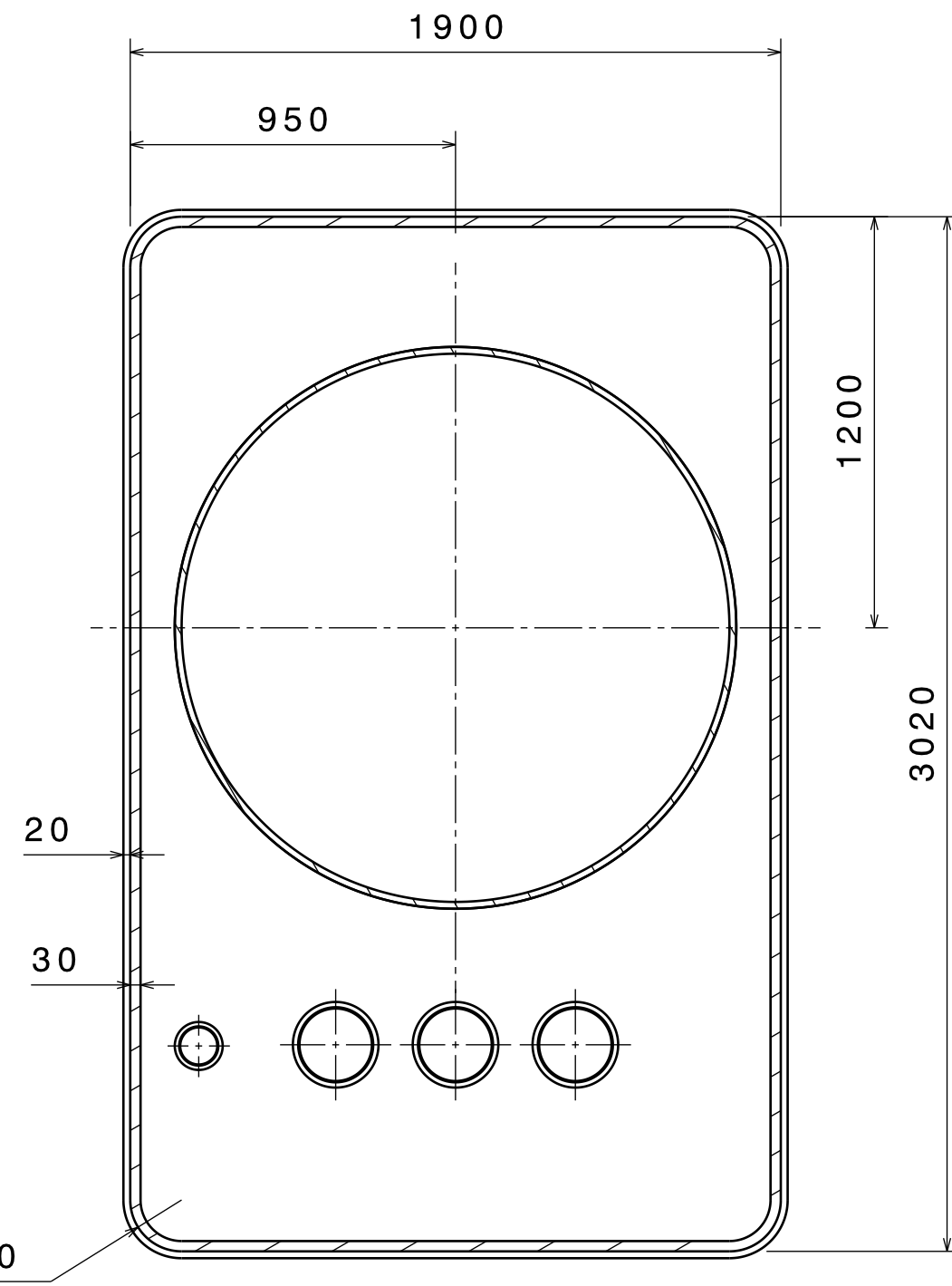


Front view

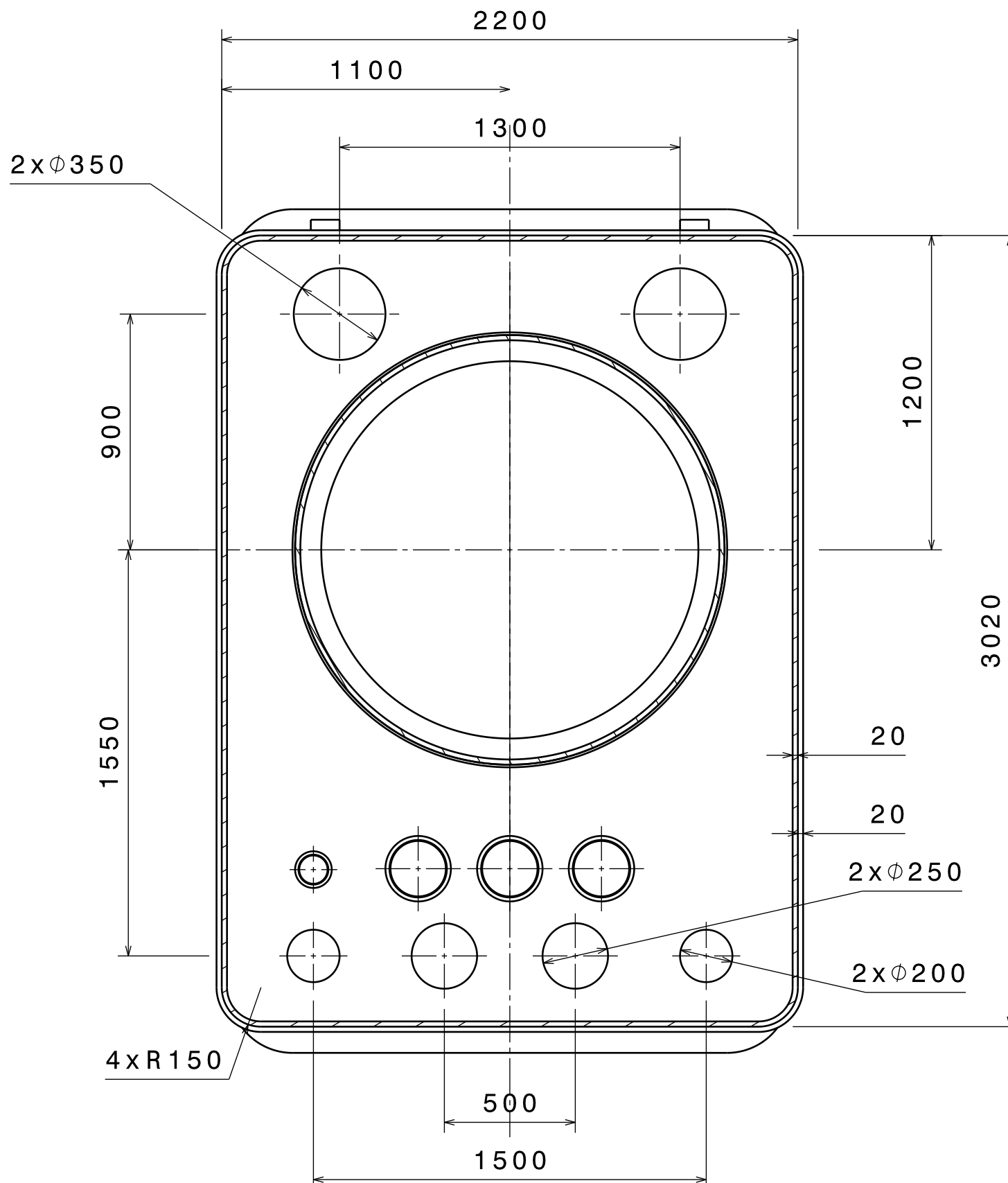
- Notes: 1. These values are nominal values. They can change according to the custom machining of the Cryostat Wall Flange (See sheet 5).
2. ISO 2768 - mK tolerances apply for this sheet unless more stringent tolerances are specified. ISO 13920-BF to apply for welded parts.
3. Design of lug shall be finalized at the time of handling based on handling analysis



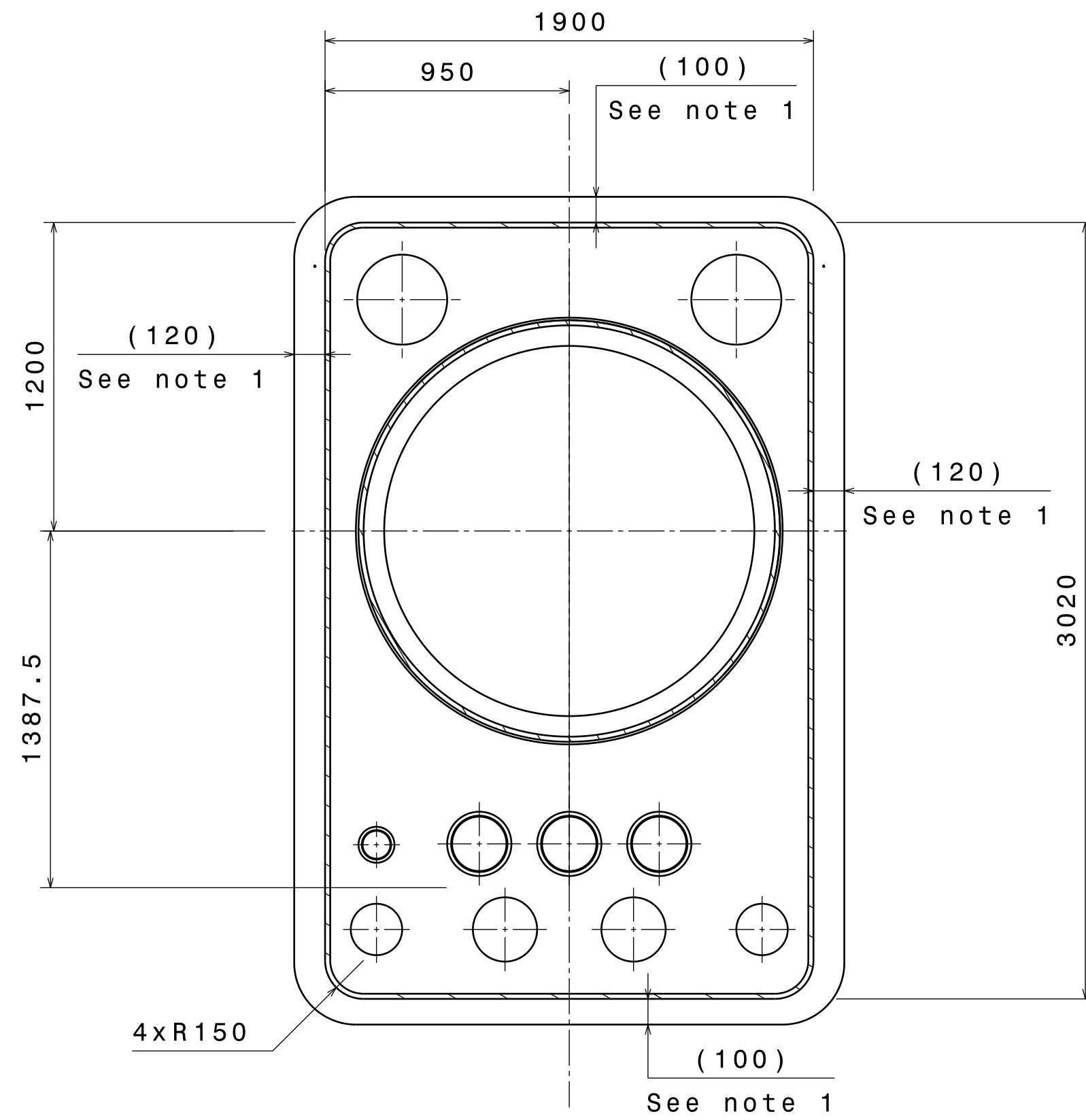
Typical for the 3
Lifting Lugs
(See Note 3)
Detail J
Scale: 1:2



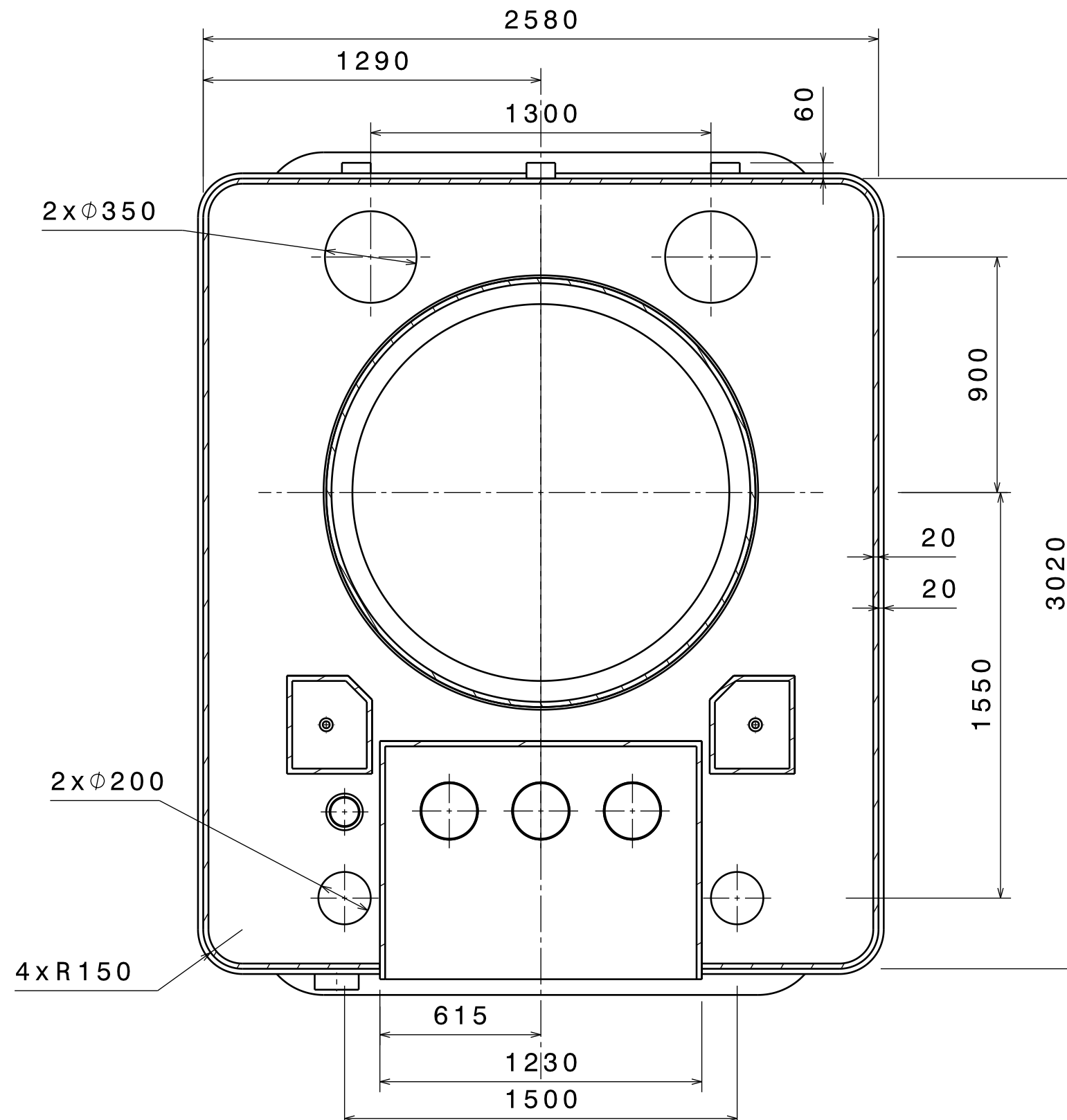
Section view K-K




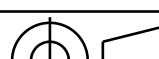
Section view M-M



Section view L-L



Section view N-N

DRW DOC ID			Q5BJF9			RELEASED BY			ITER Organization					
LINKED EV5 PT ID			U2L8RU			---								
PBS TITLE			Cryostat & VVPSS			APPROVED BY								
Cryostat						PETITPA								
Lower Cylinder						CHECKED BY			DRAWING TITLE					
						BEAUDOS			CR_LC_TCP_HOUSING_TYPE_B_DET					
REV DATE			PT MATURITY			PT VERSION			CONTROLLED BY					
03 Apr 18			CD			--D			VITUPIG			MAIN STRUCTURE		
SHEET SIZE			SCALE			PT STATUS			DRAWN BY					
841x594			1:20			D			VAUQUEJ					
THIRD ANGLE			NO.OF			PBS 3 LEVELS			DRAWING			SHEET		
PROJECTION			SHTS			24 CR LC			NUMBER			034460		
			08									08		
												--D		
												D		

A

B

C

D

E

F

G

H